

New scheme uncovers some treasures

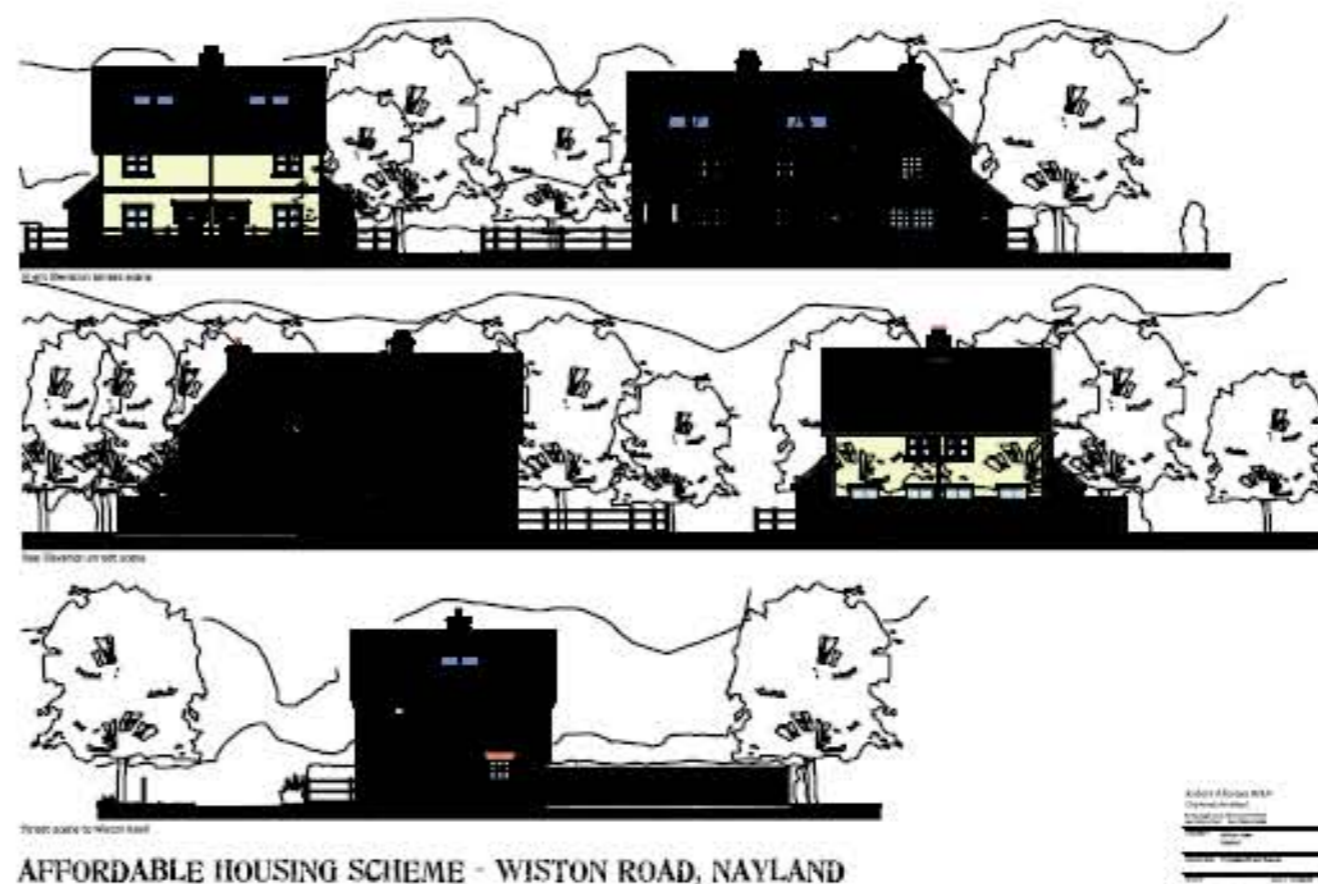
Plans to build a very sheltered housing scheme in a Babergh village have been slightly delayed after significant archaeological finds were discovered when groundwork started. The development of 32 flats and bungalows, with communal areas, is due to be built on land off Days Road, Capel St Mary, by Babergh's partner social landlord Orwell Housing Association. A thorough archaeological investigation of the whole site is currently being carried out and means actual construction may be delayed by up to 12 weeks. Archaeologists from the Cambridge Archaeology Unit have been busy working carefully to make sure any finds are removed, logged and preserved. It is thought work on one part of the site is now close to completion and building work can finally start in earnest, with completion of the project is still scheduled for Spring 2010. These homes will allow elderly residents to retain their inde-



pendence – with a high level of care and support – and is just one way in which Babergh is providing for its current, and future, ageing population. An information afternoon is being held for this scheme on June 18th, from 2pm until 5pm, in the Capel St Mary library, next to the Village Hall. Everyone is welcome to attend and look at the plans and register interest. The new homes will be built on a rural exceptions site, which means residents from Capel and the surrounding parishes of Copdock and Washbrook, Great Wenham, Little Wenham, Bentley, and East Bergholt will get priority. To date, Babergh has already had 36 registrations. If you would like more information on the Open Afternoon – or to register your interest for this latest development or get further information about affordable housing in your area – please visit www.babergh.gov.uk or call Babergh on (01473) 825757.

Not just bricks and mortar

With Babergh reaching its Target 700 earlier this year, *Babergh Matters!* takes a look at some schemes which are all at different stages of the affordable housing process. In Monks Eleigh, two homes for affordable rent have just been handed over. The two bedroom houses were developed on Babergh-owned land in response to a strong local need. The houses, both which are earmarked for social rent, is a result of partnership working between Babergh, South Cosford Parish Council and Orwell Housing Association. Meanwhile, in Ipswich Road, Holbrook, a partnership between Babergh, Orwell, Housing Association and Holbrook Parish Council has resulted in 12 new two and three bedroom homes. The homes, which are due to be finished next month, are being developed as a Rural Exception Site – meaning they are allocated to local families or for people with a strong connection to the village who would have otherwise found it difficult to afford a home in this area.



In Wisington Road, Nayland with Wisington, another Rural Exception Site is on the cards to be developed. If given the go ahead - the plans are due to be submitted imminently - five new two and three bedroom houses for social rent specifically reserved for local families will be built.

A consultation afternoon for this scheme was held in April and was extremely well-attended. If you would like to register your interest for this latest development or get further information about affordable housing in your area - please visit www.babergh.gov.uk or call Babergh on (01473) 825757.