

**BABERGH DISTRICT COUNCIL**

**FROM: Member Representatives**

**REPORT NUMBER F210**

**TO: OVERVIEW AND SCRUTINY  
(COMMUNITY SERVICES) COMMITTEE**

**DATE OF MEETING 27 March 2007**

**REPORTS FROM MEMBERS**

PLEASE FIND ATTACHED THE FOLLOWING:-

- (a) REPORT ON THE WEST SUFFOLK LOCAL STRATEGIC PARTNERSHIP AND COMMUNITY STRATEGY BY MR C M SPENCE
- (b) REPORT ON THE BABERGH EAST LOCAL STRATEGIC PARTNERSHIP BY MRS S P CLARKE
- (c) REPORT ON THE HAVEN GATEWAY PARTNERSHIP BY MR D L WOOD

**CONTACT: Linda Pattle**

**DIRECT LINE: 01473 826652**

**BABERGH DISTRICT COUNCIL**

**FROM:** Councillor Colin Spence

**REPORT NUMBER**

**TO:** Overview and Scrutiny (Community Services) Committee

**DATE OF MEETING:** 27 March 2007

**UPDATE REPORT ON THE WEST SUFFOLK LOCAL STRATEGIC PARTNERSHIP AND COMMUNITY STRATEGY**

**1. PURPOSE OF REPORT**

- 1.1 The WSLSP was set up in 2001 and consists of public sector, community and voluntary organisations and businesses. It covers the geographic area of Forest Heath District Council, St Edmundsbury Borough Council and the western part of Babergh District Council, with a population of approximately 200,000. One of its main purposes is to prepare and publish a Community Strategy, which is a statutory duty on local authorities in partnership with other organisations. The second Community Strategy 'Making Life Better' was published in 2006.
- 1.2 The Overview and Scrutiny Committee received the Annual Report on the WSLSP and Community Strategy at its meeting on 17 October 2006 which outlined the contents of the new Community Strategy and the progress made on allocation of the Performance Reward Grant (PRG) funding, which the LSP had received. There was also an update of the progress of the projects under the LPSA targets.
- 1.3 For the purposes of this report there is an update on the allocation of the Performance Reward Grant funds, and an item from the LPSA allocation on a project in Glemsford.

**2. PROGRESS ON THE ALLOCATION OF FUNDS**

- 2.1 The WSLSP Board on 20 December 2006 agreed how the funding would be allocated, and below is a brief description of how the funding is being used. The projects have been divided into four 'cross-cutting issues' (CCI's) which are:

- Respect alcohol, respect yourself
- Bridging the skills gap
- Changing community needs
- Sport and physical activity.

- 2.2 All of the CCI's and individual projects involve contributions of time and expertise from your own officers. Each of the CCI's is described below.

**2.2.1 Respect alcohol, respect yourself**

£198,922 has been allocated to alcohol projects which will cover licensed premises visits to test under age sales, training of licensed premises bar and door staff, interactive drama presentations in schools, student workshops at West Suffolk College, and education packs to be placed in all licensed premises. It is intended to obtain 'sign-up' of all licensees to these activities. The project will give advice, information, training and support to all aspects of the community.

In addition a project working with prolific offenders who also abuse alcohol will also be funded. Many offenders are trapped in an unending cycle of alcohol misuse, crime and entry into the Criminal Justice system. They lead chaotic lifestyles, which frequently results in self-exclusion from mainstream services and society. This Prolific Offenders Intervention Project aims to break the cycle and support chaotic substance misusers to reintegrate with society in exchange for disengaging from criminality.

Alcohol awareness training courses will also be implemented, which invite participants to look at how and why they drink alcohol. Their aim is to enable them to understand the unconscious drives and motivations that lead them to abuse alcohol. Behaviour that seems fixed and unchangeable can be modified when consciously owned and understood. These courses will enable participants to face the facts of their lives and successfully challenge their self-destructive tendencies.

All the projects are aimed to increase awareness of the risks of alcohol abuse and to reduce alcohol related crime.

These are very wide ranging initiatives and will be relevant to West Babergh. We are looking at ways to work with licencees and schools in West Babergh as well as including students from West Babergh in the college workshops, as will be the case for the awareness training with West Suffolk MIND. However liaison with the Babergh Crime and Disorder Reduction Partnership should be improved. It is one of the issues regarding West Suffolk that the two CDRP's are not co-terminus, and therefore liaison should be a matter of urgency.

### 2.2.2 **Bridging the skills gap**

£30,000 is being allocated directly to addressing the Skills Gap which will allow the West Suffolk College to work in partnership with employers to develop a Training Needs Analysis to lead to the creation of 'Training Plans'. The project will train staff to conduct training needs analyses for small companies in West Suffolk. This will enable effective training to be arranged that suits the needs of the business, improving its performance and enhancing career development for individual employees. This project will include employers from West Babergh.

An allocation is being made to enable the commencement of plans on the West Suffolk College site for a university campus for West Suffolk.

### 2.2.3 **Changing needs of communities**

This CCI has been split into two parts, migrant workers and elderly people. £86,993 has been allocated for community needs projects including an information booklet to provide advice, support and guidance to the public to enable them to access services. The booklet will cover a wide range of topics including local authority services, health, education, victim support, legal advice and employment. The booklet will be translated into Polish, Portuguese and Russian, to help migrant workers to understand and access services. Information relevant to West Babergh will be included in this booklet.

A series of roadshows will be organised in the Brandon area to help members of emerging minority communities to understand how to keep safe and to keep within the law, and to increase the numbers of community contacts and representatives to assist with communications to and from these communities. The events will be organised by a community based organisation.

The LSP will be supporting a second Cultural Festival in Bury St Edmunds in May 2007. This celebration of the rich cultural mix of the population of West Suffolk will be held on 29 May 2007 to raise awareness of cultural diversity with exhibitions, workshops and demonstrations and food, in order to engage the community and to build links with the voluntary and community sector. It is hoped that new community groups will be developed and emerging ones helped to develop. We will use the day to launch the information booklet for migrant workers. The cultural festival will be available for all groups and residents in West Suffolk.

For older people we will be purchasing 600 new slippers to replace 'Sloppy Slippers'. This project is aimed at reducing falls and accidents in the home from ill fitting and old slippers. Each year in the UK there are over 2.7million accidents in the home which necessitate a visit to hospital, with over a million of these resulting from a fall. The project will provide well-fitting, supportive and comfortable slippers along with health information, advice on falls prevention with exercise taster sessions for older people at risk of falling. The slippers will be exchanged for old ones at health and well-being events, which will be held around West Suffolk. This bid was originally led by the former Suffolk West PCT and was intended to cover the whole of West Suffolk including West Babergh, as will the fuel poverty scheme described below.

There is also a project to address fuel poverty among older people, which will develop a targeted referral system using "home visitors" – public and private sectors, able to identify and support vulnerable elderly households to alleviate fuel poverty. The system will be supported by a single point of access for West Suffolk with its own marketing programme for promotion.

Support will be given to the establishment of a Good Neighbour Scheme in four areas of West Suffolk. The Good Neighbour Scheme benefits principally elderly people suffering social exclusion and rural isolation. Each Good Neighbour Scheme offers its services to all age groups, but in practice it is 95% elderly people who make use of the service. The co-ordinator helps individual villages or communities raise a team of volunteers who can carry out neighbourly services for their fellow villagers. These services include giving lifts, collecting pensions and prescriptions, helping with shopping, minor domestic repairs including checking smoke alarms, befriending the elderly, the lonely and the bereaved, help filling in forms, advocacy, help with pets, and occasional tidying of a garden. The co-ordinator helps each Good Neighbour Scheme establish a management committee of volunteers, agree a constitution and obtain insurance for each scheme. We are negotiating with this scheme to make sure at least one of the four areas is in West Babergh.

In addition we will also be supporting young carers of people with alcohol problems. The project will enable hard to reach young carers living in West Suffolk, including West Babergh, to access support to enable them in their caring role and keep them safe. The outreach project worker will raise awareness of young carers and support friendship groups, social clubs and special peer support groups to enable young carers living in rural areas of West Suffolk to feel less isolated. The project will particularly target very hard to reach young carers helping to look after someone with alcohol related problems, mental health, a physical or learning disability or sensory impairment.

#### **2.2.4 Sport and physical activity**

£80,000 has been allocated for spending on a variety of projects to promote participation in physical activity, including sport. The project focuses on the development of programmes aimed at increasing participation in physical activity, with an emphasis on under-represented groups and those at risk of exclusion. The project combines and enhances a number of

separate bids targeted at disabled young people and adults, volunteers, and young people at risk of exclusion and offending.

The project will also seek to provide a robust evidence base and share learning around the wider community on the value of physical activity interventions. There is a large element of training to increase skills in sports coaching qualifications, and encouragement of sport among disabled people. Creation of the project area has allowed a partnership with Suffolk County Council and Suffolk Sport to combine some county funding to be used to greater benefit in Western Suffolk. This project will also have a large element of health improvement activity, especially for people who do not routinely access healthy activity.

One of the specific projects within this CCI is the Be-Active scheme which was initiated by Babergh District Council and other aspects of this scheme will include residents of West Babergh.

### 2.3 **Overall view**

The amount allocated of £395,141 has attracted £162,922 matched funding into Western Suffolk and a great deal of committed officer time from both statutory and voluntary organisations, which would have been spent in other ways without the work of the WSLSP. Changing the priorities of partners is one of the more elusive aims of LSPs, and this way of organising projects has been able to reallocate some resources of partners to the CCI's.

## 3. **NEXT STEPS FOR THE CCI'S**

- 3.1 An Action Plan is being developed which will record very specifically targets to achieve and the measures and timescales to identify achievement. This Action Plan is now in preparation and will be published in due course as an addendum to the Community Strategy. There are 77 specific targets and reports will be made quarterly on the progress of each one. A Performance Management System (PMS) has been developed which will be updated quarterly to produce reports on the progress of each target. A sub-group for each CCI will be set up of all those involved in the projects to make sure that targets are achieved on time. This Action Plan has been attached to this report.
- 3.2 There will be some press releases issued in due course to publicise the projects and what they hope to achieve.

## 4. **LPSA – PUMP PRIMING GRANT**

In the report to the meeting on 17 October a report was presented on the allocation of PPG funds, one of which was a grant of £25,000 for reducing Anti-Social Behaviour (ASB). £5,000 of this money was specifically allocated to a project in Glemsford for a project to reduce ASB in that area.

## 5. **COMMUNITY CHEST**

- 5.1 From the original funds received for distribution it was agreed that 5% would be set aside for small grants. The amount set aside is £22,100. The LSP Forum which met on 6 November 2006 agreed the basic criteria for this fund, which is stated below:

- That grants should be for capital or revenue;
- That bidding should be open for any type of project or issue;
- Bids should be restricted to the voluntary and community organisations and to Parish and Town Councils;

- That no single grant should exceed £2,000;
- That a sub-group be set up to decide the process and consider bids.

5.2 A group of ten people, including two from Babergh, from a variety of local organisations nominated from the Forum are now on a sub-group, which has met twice. They have finalised an application form, and guidance notes and will decide at their next meeting how the process will be organised.

**CONTACT: Helen Style  
Corporate Director**

**DIRECT LINE: 01473 825783**

<b>ID NO</b>	<b>CCI</b>	<b>Project</b>	<b>Measure</b>	<b>Target/outcome</b>	<b>Timescale</b>
1.1.1	<b>RESPECT ALCOHOL, RESPECT YOURSELF</b>	<b>Put a cork in it</b>	Reduction in underage sales of alcohol in 06/07 and 07/08	06/07 – no more than 40% of premises visited make illegal sales (60% reduction in year 1)	Reduction in underage sales of alcohol in 06/07 and 07/08
1.1.2				07/08 no more than 33% of premises visited make illegal sales ( a further reduction of 7%	Reduction in underage sales of alcohol in 06/07 and 07/08
1.1.3				Over two years a 67% reduction	Reduction in underage sales of alcohol in 06/07 and 07/08
1.1.4				100 visits to take place over 2 years	Reduction in underage sales of alcohol in 06/07 and 07/08
1.1.5			Increase awareness amongst young people in relation to responsible drinking – drama presentations	Number of young people to be reached by project – minimum 6 schools to take part in project	Production to attend the school October 07  Evaluation to take place in December 07
1.1.6				Follow up visits – 6 schools to measure perception	Follow up visits to take place February 07
1.1.7			Reduce the harm that drugs and alcohol causes to communities through awareness Student workshops at WSC	15 courses (each course lasts 3 weeks) to be held per year (minimum)	30 courses to have taken place by end of 2008
1.1.8				300 Students to receive information and advice – Class Level 1	30 courses to have taken place by end of 2008

ID NO	CCI	Project	Measure	Target/outcome	Timescale
1.1.9			Reduce the harm that drugs and alcohol causes communities to enable reduction in alcohol related crime	225 bar staff trained to BIIAB Level 1 Responsible Drinking and sat exam	First round of training by May 07 (open invite)
1.1.10				60 Door staff trained on personal safety issues	First round of training by May 07 (open invite)
1.1.11				Training will be offered to those who have been highlighted under the sale of alcohol operation above	Second round of training by Dec 07
1.1.12				Education packs and information in all premises within each establishment who completed the course	From January 2008
1.1.13.				Reduction in alcohol related crime (% reduction will be based on data collected after the Christmas period)	January 2008 and 2009
1.1.14			Reduction in alcohol related crime through the awareness campaign	Licensee sign up to campaign – 65% in 06/07 and 75% in 07/08	Ongoing over 2 years – campaign will link in with seasonal trends
1.1.15				Reduction in alcohol related crime (% reduction will be based on data collected on full year results)	Ongoing over 2 years – campaign will link in with seasonal trends
1.2.1		<b>Think Smart, Drink Smart</b>	Awareness training courses undertaken	12 facilitators trained	March 2008
1.2.2				32 people completed courses	March 2008
1.2.3				80% (and absolute numbers) of positive 7 week self-evaluations	March 2008

<b>ID NO</b>	<b>CCI</b>	<b>Project</b>	<b>Measure</b>	<b>Target/outcome</b>	<b>Timescale</b>
1.2.4				80% (and absolute numbers) of positive 3 month self-evaluations	March 2008
1.3.1		<b>Prolific Offenders Managing alcohol misuse (POPO's)</b>	Engagement with all Western Area POPO's to encourage disengagement from criminality	Tactical plan for all Prolific Offenders (currently 47 offenders)	Year 1.
1.3.2			Reduce Re- Offending	Work in progress with National Offender Management Service to create definition.	To be decided Jan 07
1.3.3			Increase number of chaotic substance misusers receiving treatment.	Length of time that POPO remain free from substance misuse and continue to be disengaged from criminality.	On going
1.4.1		<b>Young carers out reach</b>	Support young carers	To run 8 friendship groups, involving at least one young person caring for someone with an alcohol problem	By spring 2008
1.4.2				5 social events involving young carers caring for someone with an alcohol problem	By spring 2008
1.4.3				8 Carer breaks / respite opportunities for young carers caring for someone with an alcohol problem	By spring 2008

<b>ID NO</b>	<b>CCI</b>	<b>Project</b>	<b>Measure</b>	<b>Target/outcome</b>	<b>Timescale</b>
1.4.4			Contact schools and provide information about young carers enabling school communities to identify and support young carers	Schools in all 5 clusters in west area know about young carers and how to refer how identify and support young carers	In Autumn / spring term 07/ 08
1.4.5				Raise numbers of referrals to project from schools	In Autumn / spring term 07/ 08
1.4.6			Identify training to support young carers	Young carers team to attend training on third party support for carers of Alcohol users	By March 2007
1.4.7			Pilot specialist BOOST group for young carers in west caring for someone alcohol / mental health difficulties	One specialist Boost to be developed and run in liaison with other alcohol services in the West	Within life of project
1.4.8			Improved health care for substance misusers and lifestyle assessment and interaction with support services	Increase proportion of substance misusers successfully sustaining or completing treatment programmes.	On going
2.1.1	<b>Bridging the Skills 'Poverty Gap' (increasing Skills for employment and Volunteering</b>	<b>Establishing the feasibility of a UCS building on the West Suffolk College site</b>	Professional services obtained	Architectural and technical services to be obtained	February 2007
2.1.2				Outline floor plans and feasibility study to enable further funding finalised	April 2007
2.1.3				Plans to be published and shared with strategic partners	May-July 2007
2.2.1		<b>Developing capacity in training needs analysis in West Suffolk</b>	Training undertaken	8 staff trained in conducting TNAs	March 2007

ID NO	CCI	Project	Measure	Target/outcome	Timescale
2.2.2			First TNAs conducted	Each trained member of staff to conduct 1 TNA and review	May 2007
2.2.3			Awareness of TNA opportunity raised with other employer engagement staff	20 staff attend session on awareness raising	May 2007
2.2.4			Second TNAs conducted	Further TNA completed by each trained staff member	June 2007
3.1.1	<b>Changing Needs of Communities Migrant Workers</b>	<b>Information booklet</b>	All relevant services to Western Suffolk are included in the booklet	To engage with relevant services and obtain permission and information for inclusion	By end February/March 07
3.1.2			Formation and production of booklet	To establish a project group to oversee the production of the group	February 2007
3.1.3				Format booklet and seek partner approval	February 2007
				Booklet to be translated	April 2007
3.1.4				Print booklet	April/May 2007
3.1.5			Launch booklet at Festival of Culture	Booklet complete and ready for launch	May 07
3.1.6.			Booklets to be publicised and distributed	To engage with existing migrant groups to ensure appropriate distribution (predominately web based to enable easy updating)	June 07
3.1.7			Project group to monitor success of booklet.	Project group to meet twice a year to ensure booklet is up-to-date and relevant.	Ongoing
3.2.1		<b>Emerging Minority Community Communication Events</b>	Three roadshow events to be held in Brandon one each for those speaking Portuguese, Polish and Russian as a first language	20 – 30 to attend each event	Timescale required
3.2.2			Number of new community contacts	Four per each nationality/ethnic group	Timescale required

ID NO	CCI	Project	Measure	Target/outcome	Timescale
3.2.3			Evaluation of events	Feedback collected from participants	Timescale required
3.3.1		<b>West Suffolk Festival of Culture</b>	Event organised	Event completed	29 May 2007
3.3.2			Numbers of people from ethnic and cultural groups	10 different ethnic groups	29 May 2007
3.3.3			Attendance at event	500	29 May 2007
4.1.1	<b>Changing Needs of Communities Elderly persons</b>	<b>Warmer Homes for Elderly people in West Suffolk</b>	Training to home visitors – public and private	Have more awareness and skills to identify fuel poverty. More older people will be living in warmer homes.	6 months
4.1.2			Design and publish literature.	Produced and distribute to targeted homes and places. People are aware who to call.	Distribution to start no later than September / October 2007. Ongoing through winter.
4.1.3			Have a single point of access number.	Enquiries are made through the number, people are being helped.	In line with distribution of literature.
4.1.4			Increase uptake of energy efficiency grants.	X amount of people are living in warmer homes.	Reflected in the energy efficiency grants figures – monthly and annually.
4.1.5			Decrease in excess winter deaths.	X % less winter deaths.	Reflected in winter death figures annually.
4.2.1		<b>Good Neighbour Scheme in West Suffolk</b>	4 new groups commenced	Increased social capital through the formation of a local steering group	50% by mid point, total by end of period
4.2.2			160 volunteers recruited	Improved sense of well being for individuals	50% by mid point, total by end of period
4.2.3			5 groups receive development and training opportunities	Enhanced individual skills and capacity for community led action stimulated	50% by mid point, total by end of period

ID NO	CCI	Project	Measure	Target/outcome	Timescale
4.2.4			4 groups establish a "nominated neighbour" initiative	Fear of crime, anti social behaviour diminished for vulnerable older people benefiting from support provided, diminished number of distraction burglaries within these groups.	50% by mid point, total by end of period
4.3.1		<b>Sloppy Slipper Campaign</b>	450 older and vulnerable people helped to remain independent in their own homes	Enhanced health and well being for older and vulnerable people	50% by mid point, total by end of period
4.3.2			Number of slippers distributed	To distribute the complete stock	Minimum 6mths – maximum 1 year
4.3.3			Reduced the number of falls at home as a result ill-fitting slippers	Monitor fracture rates and numbers admitted to hospital as a result of a fall	As above
4.3.4			Reduce the number of ambulance call-outs as a result of a fall due to ill-fitting footwear	Obtain ambulance service data re: to call-outs as result of a fall	1 year
4.3.5			Supports a reduction in hospital admissions that occur as a result as a fall	Obtain hospital admission rates that have occurred as a result of falls	1 year
4.3.6			Access to other home safety information available e.g. Home and Fire Safety	Data will be provided from other services that have been contacted as a result of the 'Sloppy Slipper' campaign	6 months - 1 year
5.1.1	<b>Getting Western Suffolk Active</b>		Sports Leaders Courses	<i>n</i> sports leaders courses held	March 2008
5.1.2				<i>n</i> participants on sports leaders courses	March 2008
5.1.3			Success Rate	%age of attendees achieving level 1 and level 2 coaching qualifications	March 2008
5.1.4			Clubmark Accreditation	<i>n</i> clubs achieving clubmark or equivalent	March 2008

ID NO	CCI	Project	Measure	Target/outcome	Timescale
5.1.5			Attendance	<i>n</i> attendances at Turn Up and Play sessions	September 2007
5.1.6			Qualitative Research	Assessment of impacts on young people and communities of project	March 2008
5.1.7			Accreditation	Accreditation for the evaluation model measuring physical activity impacts	March 2008
5.1.8			Event Participants	<i>n</i> attendances at Showcase event	April 2007
5.1.9			Conversion Rate	<i>%age of attendees at Showcase linked to mainstream activity</i>	September 2007
5.1.10			Participants B-Active HIP	108 participants	24 Year 1 84 Year 2
5.1.11			Programme Volunteers	<i>n</i> new volunteers to programme	Year 2

H:\DOCS\Committee\REPORTS\Overview&Scrutiny\Community\2007\270307.WSLSP Draft Action Plan.doc

**BABERGH EAST LOCAL STRATEGIC PARTNERSHIP**

**REPORT TO OVERVIEW AND SCRUTINY COMMITTEE**  
**MARCH 2007**

1. Since my last report the Board has met on two occasions.
2. The Haven Gateway Partnership awarded the three Local Strategic Partnerships within its area (Ipswich, Babergh East and Suffolk Coastal) funding of £42,000 for capacity building purposes under three themes, namely training, consultation and communication. The bid was submitted on behalf of the three LSPs by Suffolk County Council who engaged, with the support of the Haven Gateway Partnership, Paula Stott Consultancy and Training Services Limited.

Paula Stott has interviewed key stakeholders from the Board covering issues such as what the Board has achieved, gaps in delivery and where it is seeking to go. The report will be considered at the Board meeting on 23 March 2007.

3. We have utilised our PSA Reward Grant money in a number of ways. Some of it has been used to support specific projects in Shotley whilst our community grants scheme aimed to spread money over the entire LSP area. A small grants panel, which included 3 young people from the high schools at East Bergholt, Hadleigh and Holbrook, awarded nearly £15,000 to nine projects. Of those projects one of the most fascinating is the community garden and lunch club for older people in East Bergholt. Our award of £3,350 will bring the young and the old together. Young people will be involved in creating a garden, cooking local produce and serving meals at the Friday lunch club.
4. On a larger scale we have utilised £5,000 to support a £30,000 study on the disused British Sugar site at Sproughton. This study is mainly being funded by the Haven Gateway Partnership/EEDA but we felt it important to offer support to the study as it is consistent with one of the aims of the Babergh East LSP Community Plan which seeks to help secure a sustainable use of this site.
5. Lastly, at our next meeting we will be considering a report by the Suffolk Training Advice Point which has undertaken an audit of learning facilities in the Shotley Peninsula and made recommendations on improving access for all to learning opportunities. The report was prepared for the Shotley Peninsula Learning Partnership, which operates under the aegis of the Babergh East LSP. Discussions will take place on the report in the coming months and arrangements are being made for a Haven Gateway funded publicity day in June.

Penny Clarke  
Chairman – Babergh East LSP Board

## **Haven Gateway Partnership 2006/07**

### **Annual Report to Babergh District Council's Overview & Scrutiny (Community Services) Committee – 27 March 2007**

#### **Background**

- The HGP was officially launched in May 2001 and includes the core partners and associate partners, listed in Appendix 1. Its purpose is to provide a framework through which partner organisations can work together to promote the economic opportunities and secure the future prosperity of the major gateway to the East of England formed by the Haven Ports (Felixstowe, Harwich and Ipswich).
- The Haven Gateway covers the whole administrative districts of Tendring, Colchester and Ipswich as well as eastern Babergh and the part of Suffolk Coastal that is south of Aldeburgh. The East of England Development Agency (EEDA) have given the HGP 'sub-regional economic partnership' (SREP) status, along with eight other areas in the East of England (including the Suffolk Development Agency). HGP is one of only two SREP's that crosses county boundaries. EEDA provides HGP with an annual grant of around £200,000, split almost equally between capital and revenue.
- I am the Member representative and Mike Hammond is the officer representative on the Partnership Board at present. Babergh officers Rich Cooke, Neil Henry, Stewart Schleip and Karina Coghlin regularly attend various relevant working groups of the partnership. The Council contributed £1,000 for membership of HGP in 2006/07.
- The Board are currently considering governance changes in the light of the widening remit of the partnership and the need to ensure delivery of the key Growth Point status targets. The main considerations are as follows:
  - A reshaping of the partnership board to a maximum of 15 members – 8 private sector/7 public sector. If these changes are implemented, Babergh will have one seat on the Board as will all of the other local authority partners.
  - The creation of the post of Chief Executive.
  - The 'accountable body' holder for the partnership (e.g. budgets, financial stewardship) will pass from Tendring DC to Essex CC.
  - A proposed increase in partnership contributions from its current level of £1,000 per partner to a new system where partners contribution depends upon public or private sector status, and in the case of local authorities the size of the authority's Haven Gateway 'patch' in terms of population. It is proposed that Babergh's contributions for 2007/08 will be £6,000, which is less than all of the other local authority partners. This is currently under consideration as part of the Council's service and financial planning process.
  - Mid Suffolk DC has formally applied to join the partnership, and the application will be considered at a Board meeting in early 2007. If accepted, this may have implications in terms of the number of public and private sector members on the Board.

Appendix One and Two sets out in more detail some of the proposed changes.

## Framework for Growth

This year has seen substantial progress made towards preparing a draft 'Framework for Growth'. This has several key purposes:

- To describe the planning and related contexts for the sub region and to use this to help translate regional planning policy into joined-up, sub-regional terms.
- To bring together technical, background information that can help to inform the development of each district's "Local Development Framework".
- To provide a guide towards focused priorities for investment decisions in the Haven Gateway based upon consensus as far as possible and to act as a lever for attracting in investment based on this.

The framework is anticipated to near its completion early in the new year, although it will not simply remain static and will need to evolve over time.

## Growth Point Bid

Early in 2006 a bid was made to the government for the Haven Gateway to receive 'Growth Point' status. This seeks to gain recognition for areas that are to receive high levels of housing and economic growth. The growth in the Haven Gateway Region would be focused on Colchester, Ipswich, Harwich and Felixstowe. This recognition would partly take the form of government funds for investment in infrastructure, particularly that which will help unlock barriers to growth (such as local regeneration projects). The bid was successful and a range of important local projects are to be funded as a result.

An example of these is the award of nearly £50,000 to allow for the commissioning of a sub-regional 'Green Infrastructure' study. This will look strategically at the area's major greenspaces, assess their merits and identify priorities for future action to improve greenspace provision in the Haven Gateway. Whilst Growth Point status recognises the levels of growth that the area is to take, the importance of counterbalancing this by protecting the high quality of its environment is critical and this particular project will serve to ensure that this balance is struck satisfactorily.

Equally importantly, the gaining of Growth Point status is seen as highly valuable to the area as a means of attracting in various sources of funding in the future. In that context, it is already understood that it is likely that there will be more funding for the various Growth Areas from government in the future. The above-mentioned Framework for Growth also has a specific role in attracting in these funding streams in future.

## Investing In Communities Programme

EEDA's Investing In Communities programme is designed to enable the most deprived communities to achieve their full potential and therefore contribute to and benefit from sustainable economic growth in the East of England. The programme is devolved by EEDA to the nine SREP's who have each developed interventions based upon local circumstances, with 2006/07 being the first year that significant money for project delivery

has been available. The HGP IIC fund is likely to be worth between £8.1m - £11.1m over the period 2007/08 – 2010/11. Three of the funded IIC projects have had a particular relevance to Babergh, although they have been delivered across a wider area.

- Commercial rural regeneration adviser – this project builds upon a successful pilot in Tendring district where a rural adviser is appointed to identify and bring forward rural redundant and under-used buildings, such as farm barns, for commercial use thus encouraging rural employment and increasing the scarce supply of employment land. The success of the project is derived from the personal contact with local landowners and farmers to identify sites, close working with economic development to locate potential investors, and the pre-application negotiations with planning and highways officers to give applications the best chance of approval. The project has been spread across the Haven Gateway area utilising the skills of Ed Bennett, who has worked from the Babergh offices one day per week since August. In his short time working at Babergh, Ed has already progressed discussions on a number of sites in the district, as well as organising a rural conference in October and commissioning an audit of farm buildings in the Haven Gateway area.
- A study into the economic impact and skills requirements of the leisure marine sector has been carried out that has highlighted the importance of this sector to the local economy. The economic impact study by the Akenham Partnership highlighted that there are over 250 businesses employing 1800 FTE in the Haven Gateway area, 36% of which are clustered in the Babergh district on the southern shore of the River Orwell, with 26% of the HGP area's annual sales (£14 million p.a.). A lack in number and affordability of mooring spaces across the HGP was also noted. The skills report noted shortages in many areas including engineering, carpentry, electronics, marketing and IT. The report will be used as a basis to encourage partners to invest in areas of need to support this important sector.
- The IIC programme is also tasked on meeting areas of need in rural areas. A study has been carried out of the educational facilities available on the Shotley Peninsula to identify the needs and opportunities that exist and the access difficulties caused by the rurality of the area. This study will inform the Shotley Peninsula Learning Partnerships work to encourage the community to access the existing provision and to provide new services where gaps exist.

### Tourism

- The Cruise Co-ordinator post has now come to the end of its three-year plan and further funding was unfortunately not forthcoming. The aim of the project was to increase the value of tourism to the Haven Gateway sub-region by working with Harwich International Port and other partners to encourage new cruise operators to use Harwich as a port of call, so passengers can book day excursions and tours of the area. A lot of work has been done to raise awareness of the area and in terms of cruise operators, there were approximately 43 cruise calls booked for 2006, five of which were new business. A website has been created and relationships developed with operators, itineraries developed and marketing material published. EEDA funding for the scheme

has now ceased and EET (East of England Tourism) have agreed to field enquiries in the short term.

- Three new tourism kiosks have been put in place, one in the ferry terminal in Harwich, one in the cruise terminal and one in the Hook of Holland ferry terminal.
- Funding has been given by EEDA and ACEE (Arts Council England East) to employ consultants to write a cultural strategy for the Haven Gateway region. This is due to be presented to the tourism sub group in January 2007 and will highlight shortfalls in the cultural provision in the area and recommend ways to maximise the tourism potential of the cultural offer.

### Transport Group

The Haven Gateway transport group has a wide remit to support the infrastructure of the growing Gateway area especially in terms of road, rail, sea and public transport. For example, the group has worked on keeping congestion on the A12 and A14 within acceptable limits. Babergh is supporting a transport study to estimate how best the changes can be managed for the imposed movements along the A14 corridor.

In addition to these main arterial routes, Babergh has an interest in the passenger ferry linking Harwich, Shotley and Felixstowe. The Council's transport objectives require us to maximise the facilities for our residents while keeping the commercial organisations profitable and doing our best for the environment.

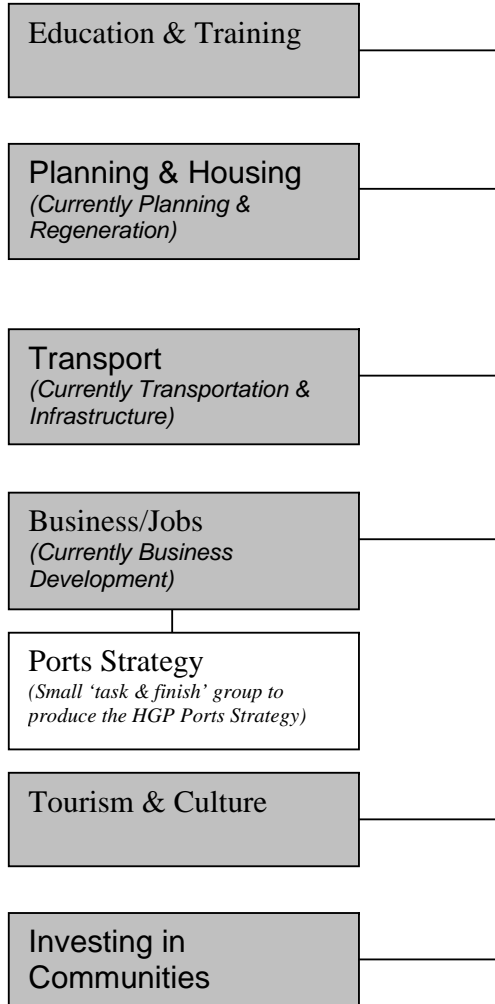
### Other progress

- Babergh and HGP, with support from EEDA, are funding a commercial study of the former British Sugar site at Sproughton. The site, which is allocated in the 2006 Local Plan for employment use, is a key strategic site that will serve the employment needs of the expanding Ipswich area. The study will identify the likely demand for the site from various sectors, and investigate the financial details involved in bringing the site forward, including making the case for public subsidy if required. The study will be completed in March 2006.
- A bid to fund vital regeneration works at Pin Mill, Chelmondiston has been submitted for consideration in the 2007/08 HGP business plan. If successful, the funding will pay for renewal works to the hard and contribute to the costs of setting up a management company to take over the day to day running of this important tourist hotspot.

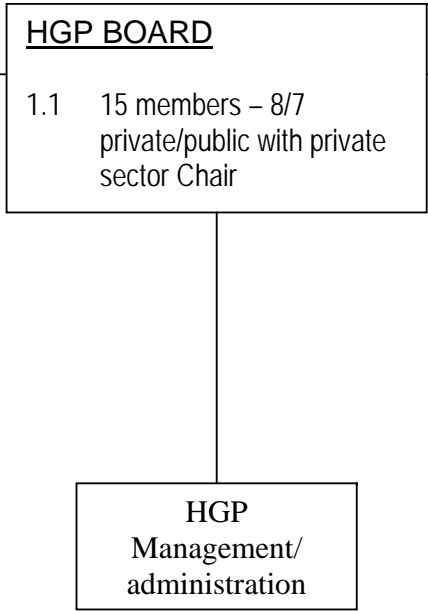
Councillor David Wood  
Babergh Representative on Haven Gateway Partnership  
January 2007

# APPENDIX ONE

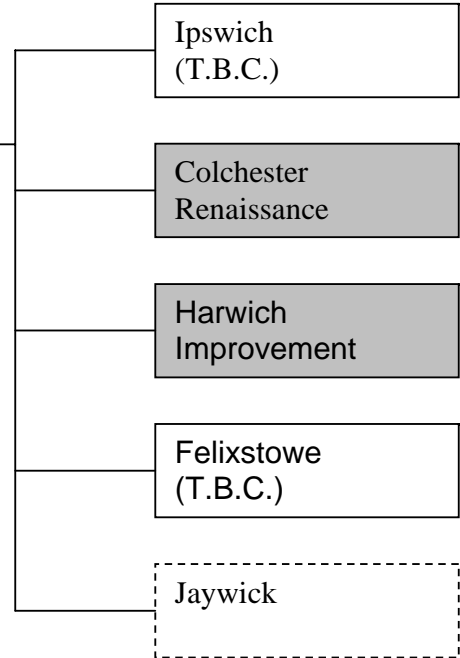
**THEMATIC TOPIC GROUPS**



**BOARD & EXECUTIVE**



**GEOGRAPHIC LOCAL DELIVERY ARRANGEMENTS**



= Existing group/structure

## **THEMATIC TOPIC GROUPS – TERMS OF REFERENCE & MEMBERSHIP**

The key priorities below are taken from the existing terms of reference for those groups that are already in place with a similar remit. Proposed new priorities have been drafted for the Ports Strategy Group.

### **Education & Training**

This group is Chaired by Richard Morton of the Haven Gateway Partnership. There are some 60+ participants in the group with a core of 12 organisations that attend regularly. These are identified below, although there is no consistency in which officers will attend.

#### **Priorities:**

- To identify the demand for skills, qualifications and training.
- To link the education sector with government and business.
- To invigorate education at all ages.
- To improve the working skills of school and college leavers, particularly in the shipping, ports and logistics sector

#### **Membership**

Colchester Institute	Otley College
Haven Gateway Partnership	Schools Representative
ITF Training	Suffolk College
Jobcentre Plus	University Campus Suffolk
Learning & Skills Council	University of Essex
N. W. Essex Adult Community College	W. Suffolk College

### **Planning And Housing**

#### **Priorities:**

- To develop, coordinate and facilitate the implementation of the sub regional planning policy.
- To provide a link to the Sub-regional Housing Board to ensure that housing matters are properly considered by HGP.

#### **Membership**

Stephen Andrews	Mid Suffolk District Council
Mike Bateson	Haven Gateway Partnership
Michael Bingham	GO-East
Steve Brown	Suffolk Coastal District Council
Jennifer Burns/Helen Ramsden	Essex County Council
Margaret Gough	East of England Regional Assembly
Rich Cooke	Babergh District Council
John Pitchford	Suffolk County Council
Graham Thomas	Tendring District Council
Fran Toomey (Chair)	Suffolk County Council
Ian Vipond	Colchester Borough Council
Russell Williams	Ipswich

## Transport & Infrastructure

### **Priorities:**

- The dualling of the A120 from Harwich to Stansted Airport.
- The upgrading of rail links, including the Felixstowe-Nuneaton freight route and widening of the Ipswich tunnel.
- The foundation of a regular passenger ferry linking Harwich, Shotley and Felixstowe, to support maritime business and tourism.

### **Membership**

Mike Bateson	Haven Gateway Partnership
Natalie Blaken	East of England Development Agency
Stephen Bracewell	Harwich Haven Authority
Ian Cleland	Network Rail
Paul Davey	Hutchison Ports
Peter Grimm/Fran Toomey	Suffolk County Council
John Lamb (Chair)	Essex County Council
Helen Ramsden/Peter Chappell/Jennifer Burns	Essex County Council
Mike Salter/John Brown/Sean Perry	GO-East
Jane Thompson/Sarah ward	Colchester Borough Council
Stewart Schleip	Babergh District Council
Richard Walker	Department for Transport
TBC (Previously Rob Smith)	Associated British Ports

## Business Development

### **Priorities:**

- To encourage relevant commercial interests.
- To investigate sources of funding.
- To advise the Education and Training working group on the needs and opportunities of the maritime sector
- To target business support and champion the sector's interests

### **Membership**

Mike Bateson	Haven Gateway Partnership
Stephen Bracewell	Harwich Haven Authority
George Courtauld	Haven Gateway Partnership
Alex Davey	Birketts
Paul Dickie	Pretty's Solicitors
Bob Feltwell	Suffolk Chamber of Commerce
Charles Macdowell	Kendalls
Richard Morton	Haven Gateway Partnership
Cllr John Perry (Chair)	Suffolk Coastal District Council
Juliet Price	Park City Consulting
Paul Rollinson	Institute of Directors Essex
Kim Salmon	Essex Chambers of Commerce
Darren Taylor	Harwich International Port
Clive Thomas	Institute of Directors Suffolk
John Winn	Birketts

## **Ports Strategy – task and finish group - PROPOSED**

### **Priorities:**

- In accordance with RSS policy HG4 – to prepare a ports strategy to:
- Ensure that the economic advantage of the concentration of the ports in the sub region is optimised.
- To identify cross cutting issues that result from the concentration of the sub region's ports and ensure that these issues are addressed in the relevant HGP sub groups.

## **Tourism & Culture**

Chair – Kim Jameson, Colchester Borough Council

### **Priorities:**

- Develop the position of the Haven Gateway sub-region as a tourism gateway to the East of England in order to obtain higher visitor spend, longer stays and greater use of Harwich International Port.
- Increase understanding of the economic significance and benefits of tourism in the Haven Gateway sub-region in order to make further strategic links, sustain the numbers employed in the tourism industry and lever in additional funding for tourism development projects.
- Maximise the influence of the Haven Gateway Tourism sub-group in order to realise strategic tourism opportunities such as:
  - the employment of a Cruise Co-ordinator for Harwich International Port (HIP)
  - the installation of information kiosks at HIP and at the Hook of Holland
  - the improvement of ferry links across Haven Gateway sub-region
  - the development of 'small boat' tourism in and around the estuaries of the Haven Gateway sub-region
- Balance the impact of tourism so that the following are sustained for future generations to enjoy and that the benefits of tourism are maximised for supporting local businesses and local employment.
  - Community - ensuring that a sense of community identity is maintained rather than overwhelmed by tourism
  - Environment - ensuring that the essential elements of what visitors come to see are preserved.
  - Economy - ensuring that businesses stay in business (including those which do not depend on tourism) and are not disadvantaged by tourism.

### **Membership**

Andy Birchenough	Suffolk Coast & Heaths Unit
Karina Coghlin	Babergh District Council
Elli Constantatou	Essex County Council
Tom Davies	East of England Development Agency
Scott Dolling	Suffolk Development Agency
Valerie Donovan	Suffolk Coastal District Council
Malcolm Farrow	Suffolk Coast & Heaths Unit
Trevor Hayward	East of England Tourist Board
Kim Jameson	Colchester Borough Council
Sally Looker	Tendring District Council
Karen Turnbull	Colchester Borough Council
TBC	Ipswich Borough Council
TBC	Suffolk County Council

## Investing in Communities

### Priorities:

- to meet at least bi-monthly initially to provide a forum for debate and discussion. In the case of especially urgent business an additional meeting or meetings may be called.
- to oversee the development of the long-term investment plan by the IIC Co-ordinator.
- to increase awareness of activities and communication between partners and draw on expertise from community, voluntary and private sector partners where appropriate.
- Ensure the successful delivery of new and existing projects through effective delivery mechanisms.
- Develop a clear sense of direction for the HGP IIC programme through negotiation and capacity building within the Local Strategic Partnerships (LSP's).
- Provide an interface between HGP Management Committee and the LSP's turning strategy into delivery.
- Co-ordinate the appraisal mechanism to ensure the flow of information between LSP's, IIC co-ordinator and Suffolk County Council (SCC) is a transparent process that will meet the requirements for monitor review and audit. SCC will be appointed once the long-term investment plan has been agreed.
- To continue negotiations with EEDA to develop the IIC programme.

### Membership

Laura Beardsell	Suffolk Coastal District Council
Richard Catherall	Ipswich CVS
Mike Dowdall	Suffolk Development Agency
Jane Gardner	Essex County Council
Dianne Hardy	ExDRA
Neil Henry	Babergh District Council
Jim Leask	Colchester Borough Council
Richard Morton	Haven Gateway Partnership
Selina Pawsey (Chair)	Haven Gateway Partnership
Jai Raithatha	Suffolk County Council
Karl Randall	Tendring District Council
Vivienne Wiggins	Haven Gateway Partnership