

# BELLE VUE JUNCTION

---

## A Case for Shared Space



# Our Starting Point

---

- We appreciate your priority for good traffic flow through town
- We agree that we need an attractive gateway to the town
- We share serious concerns regarding increased traffic flow

# Opportunity for innovation

---

- A great opportunity for quality regeneration for this key area of Sudbury
- An innovative scheme will make a seriously good statement about our town
- The design should complement the town's historic setting
- Highways' two 2013 workshops encouraged us to embrace a Shared Space solution

# Shared space

---

- Provides an emphasis on sharing and negotiating
- It lowers traffic speeds and will allow pedestrians to cross
- It allows smoother traffic flow rather than stop - start
- It provides a more attractive public space that is not entirely led by traffic management

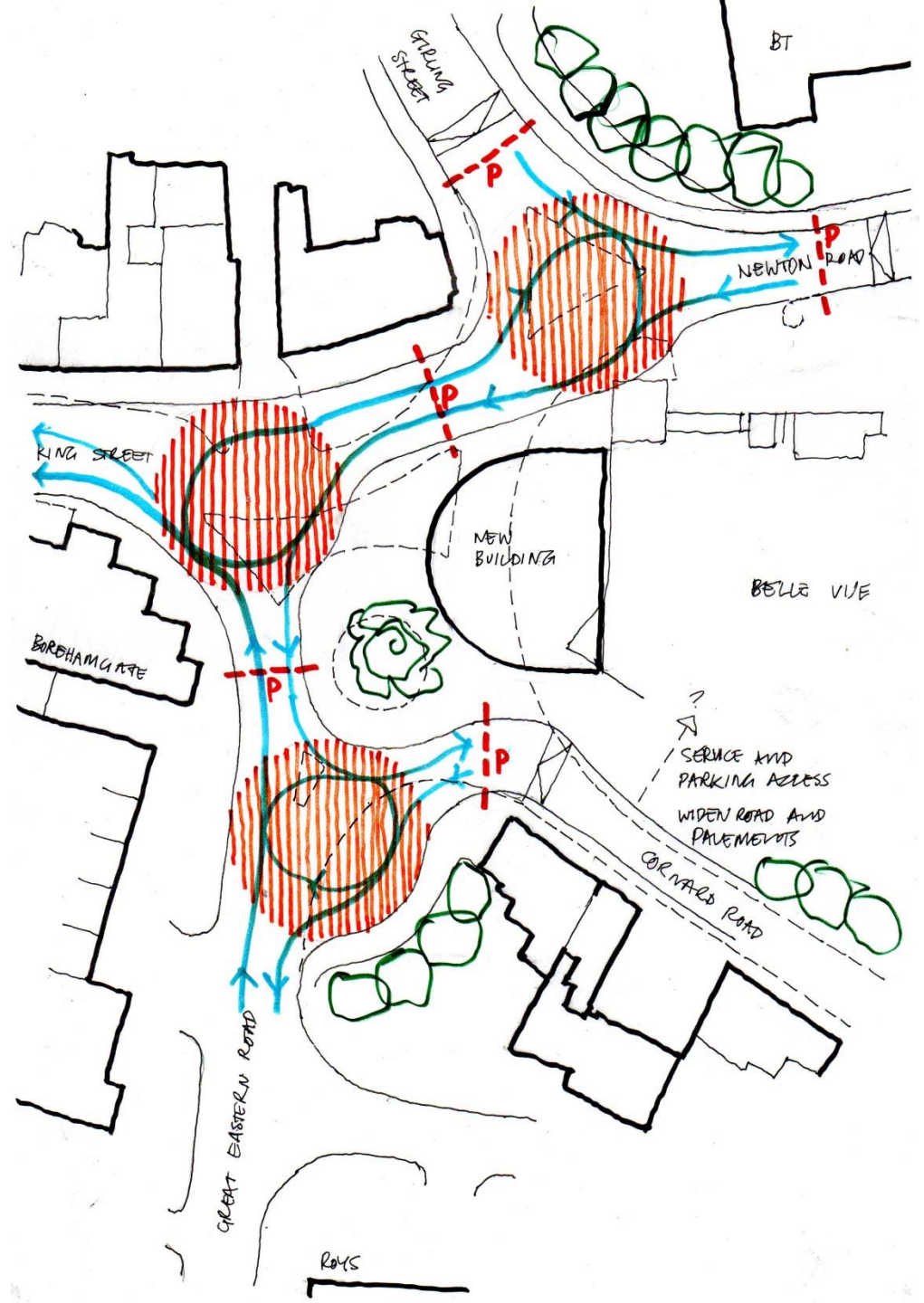


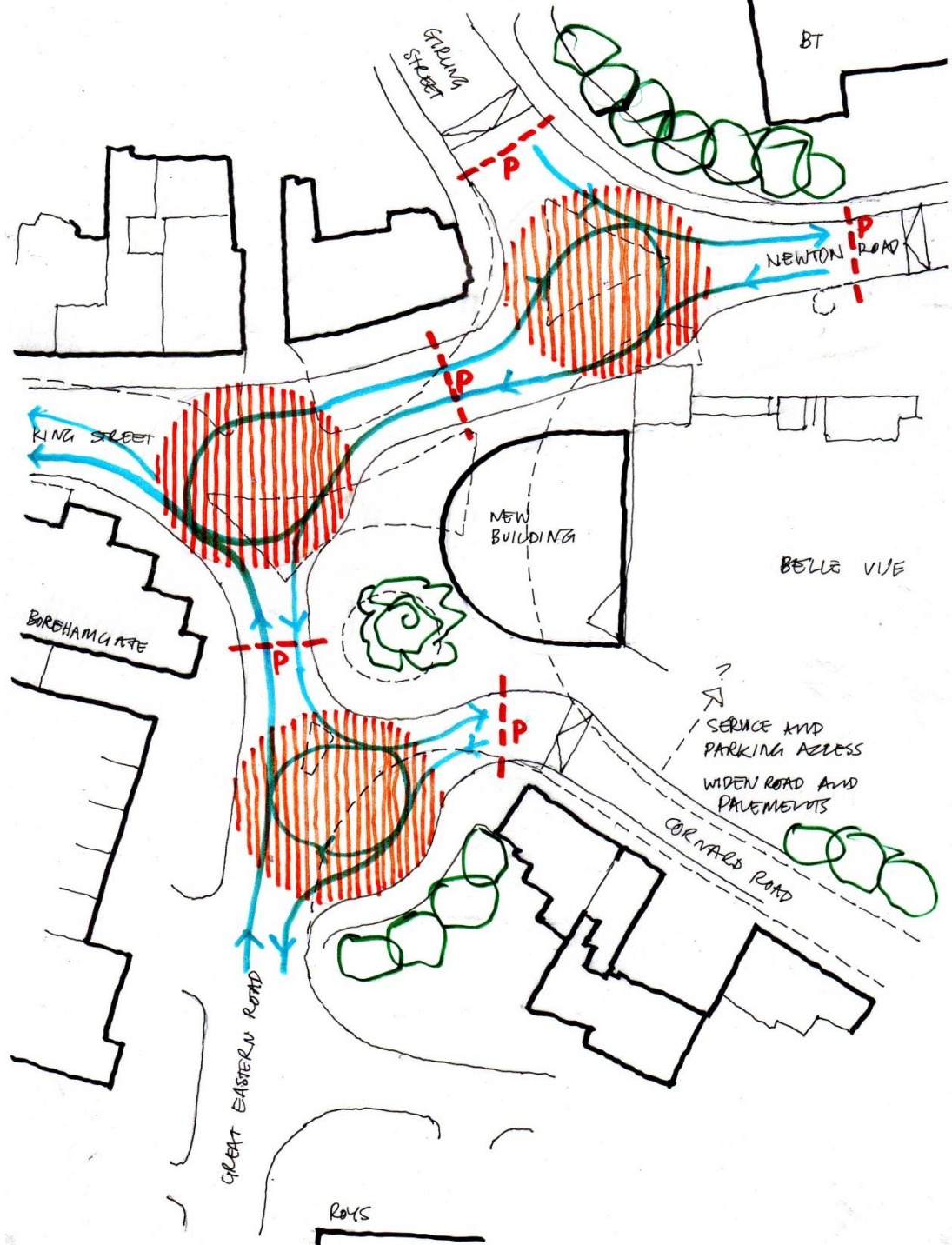
- Poynton scheme demonstrates the success of managing a comparable number of traffic movements to BVJ



# What we'd like to see

- A non-standard approach to controlling traffic management
- To follow the lead of similar schemes such as Poynton
- To take the opportunity of serious visual upgrade of this key area
- The possibility of bringing a smile to both drivers, cyclists and pedestrians









# Cost

---

- Can we suggest sensitive use of thermoplastic paint applied to tarmac - No costly and time consuming application of granite setts and kerbs
- This simpler approach means a much shorter time to implement the project - less impact on our town's retail sector
- It eliminates the need to install traffic lights and all that costly infrastructure



A flagship scheme  
providing an  
attractive gateway **welcome**  
to the town

---