

New Air/water unit

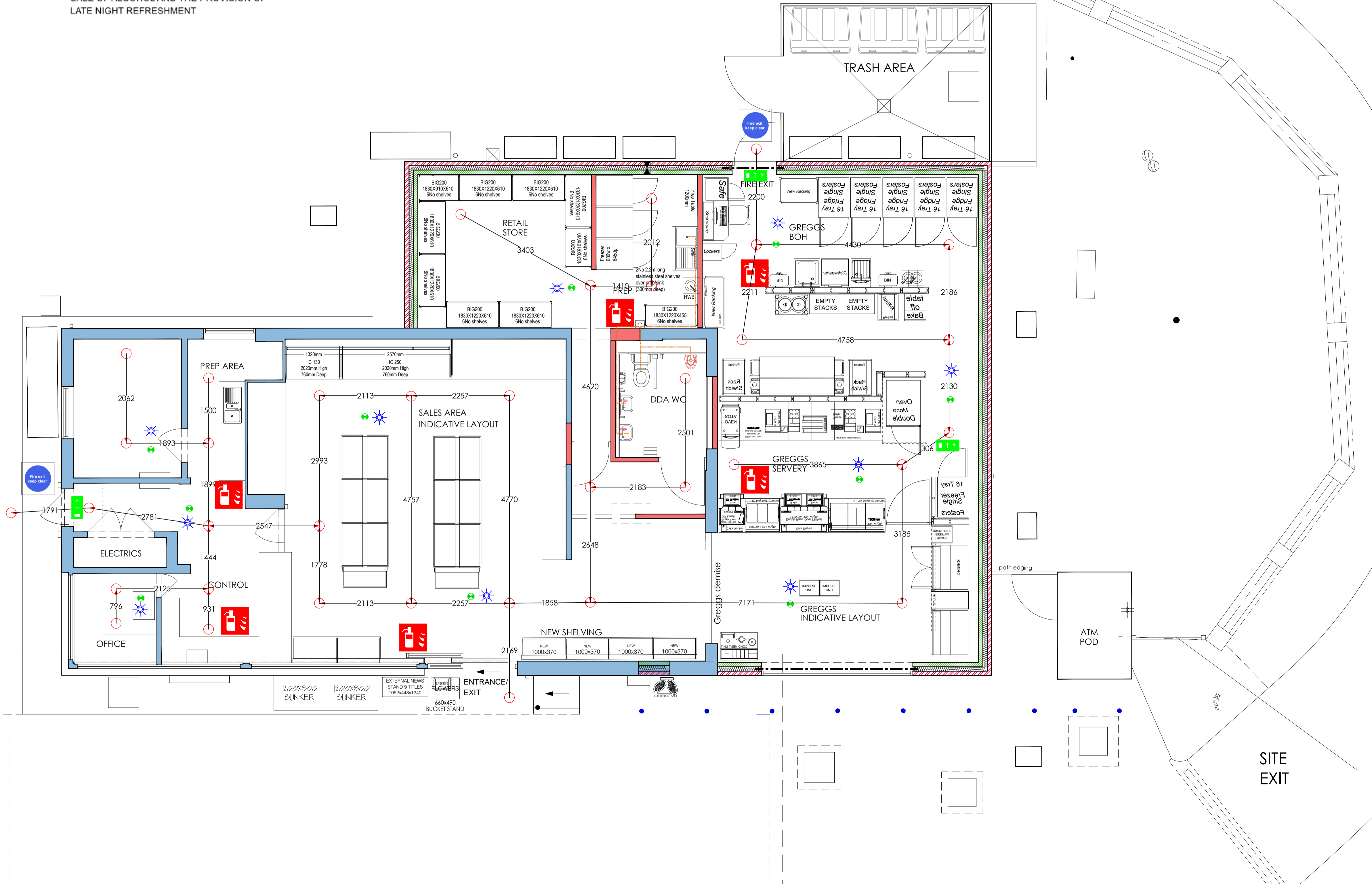
THE ENTIRE PREMISES MAY BE USED FOR THE SALE OF ALCOHOL AND THE PROVISION OF LATE NIGHT REFRESHMENT

LEGEND

- Fire Extinguisher Location
- Keep Clear Vinyl Sign applied to door exterior
- Emergency Illuminated Fire Exit Direction sign over exit route door
- Emergency Lighting
- Location of Smoke Detector
- Fire strategy route

GENERAL NOTES

Fire alarm system to be installed in accordance with BS 5839 PT1.
Emergency lighting to be installed to BS 5266 PT1.
Fire signage to be installed to BS 5499 PT1



rev	date	by	description
A	03-03-26	GKY	updated following scoping meeting 27th feb 26
-	16-02-25	GKY	Drawing Created



PROJECT LOCATION
Capelgate Service Station
A12 Northbound, Capel St Mary
Ipswich, IP9 2JJ

DRAWING
Fire Safety Layout Plan

Date: Feb 2026	Drawn By: GKY	A1 original plot size
Scale: 1:50 @A1	Dwg No: C	Rev: A

TENDER

Scope of Works Layout Plan
Scale 1:50

