

**BENTLEY VILLAGE** has a history stretching at least as far back as the 600's when the Anglo-Saxons founded a settlement and it is mentioned in the 1086 Domesday Book.

**The Case is Altered**, locally known as 'The Case', its origins are thought to date back to the late 1770's. Nowadays it is a very successful community owned pub run by volunteers. It offers a range of real ales and locally sourced food. Closed on Mondays and Tuesdays.

**The War Memorial** was designed by Munro Cautley and erected three years after the end of the First World War on 27 November 1921. It commemorates the names of the 16 local men who fell in the First World War and the 7 who fell in the Second World War.

**The Village School** was constructed in 1854 using plain red bricks and designed with the teacher's house at one end. Originally it was a national school for promoting the education of the poor in the principles of the church. Today it is a primary school with shared resources with the primary school at Copdock and Washbrook.

**The Church** was almost certainly centrally placed in the village when built and dates back to the Norman's (13<sup>th</sup> century), but a lot of what we see now is restoration. In about 1857 the North Aisle was added. The Church is dedicated to the Virgin Mary and three late Victorian windows in the chancel concern her. The oldest parts, both 13<sup>th</sup> century, are the tower and the south wall of the nave.

**Bentley Hall** is a Grade II\* listed Tudor House with outbuildings. It was the medieval seat of the Tollemache family until they acquired the lands at Helmingham. The House and outbuildings were restored in 1974-1978. In 1668 the Hall was sold to the Gosnold family from Otley, famed through Bartholomew, who founded the first European colony in North America in 1607 and gave his daughter's name to Martha's Vineyard.

**The Long Barn** is a Grade II\* listed building, probably built in 1582. Reputed to be the longest historic barn in Britain, it is 15 bays long and timber framed, the gaps being filled with bricks. Those at its two ends form diamond-shaped patterns. It is no longer used and had fallen into neglect.

Bentley Village lies on the edge of Constable Country and the Shotley peninsula. *It is close to East Bergholt, Dedham, Manningtree and Alton Water at Stutton.*

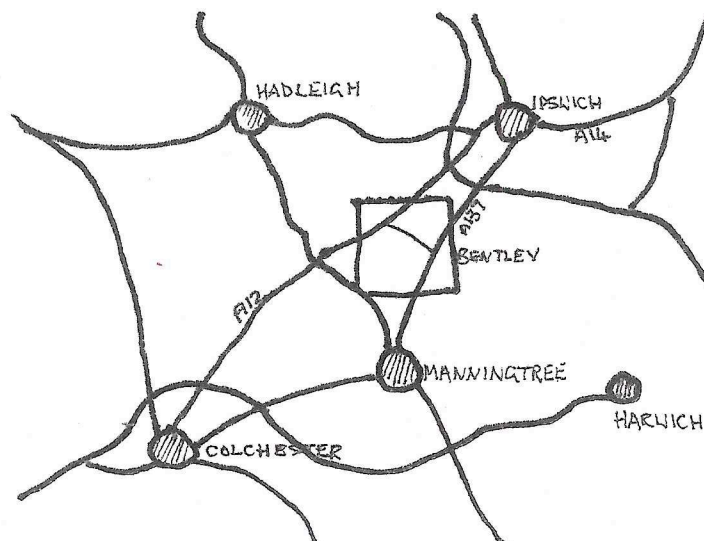
The village is situated between the A12 and A137 roads, 7 miles from Ipswich and 12 miles from Colchester.

If you arrive by car, you can park at the 'The Case is Altered' car park. Parking is also available for a maximum of 6 cars at the Village Hall but not on Saturdays.

Ipswich Bus Services passes through Bentley and Capel St Mary. Phone No 0800919390.

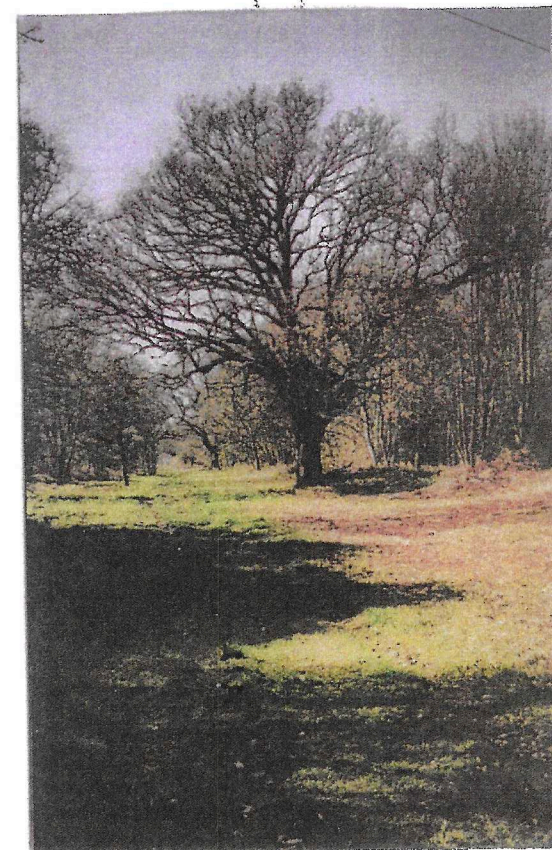
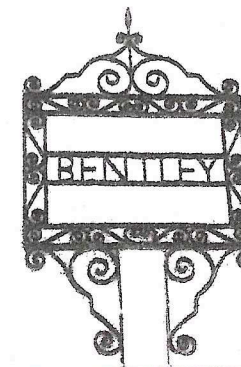
A Community Shop run by volunteers is always open Monday to Friday 8.30 am until 5.30 pm, weekends 8.30 am until 12.00 pm.

Due to the nature of the terrain, the walk is not suitable for disabled walkers and walking boots are advisable.



#### COUNTRY CODE

- Always keep to the foot paths
- Keep your dogs under control
- Take your litter home
- Respect the countryside around you

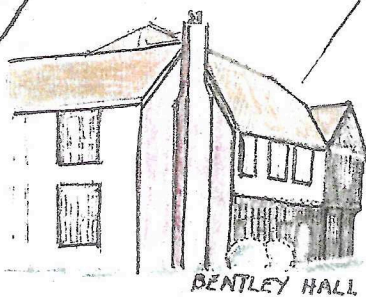
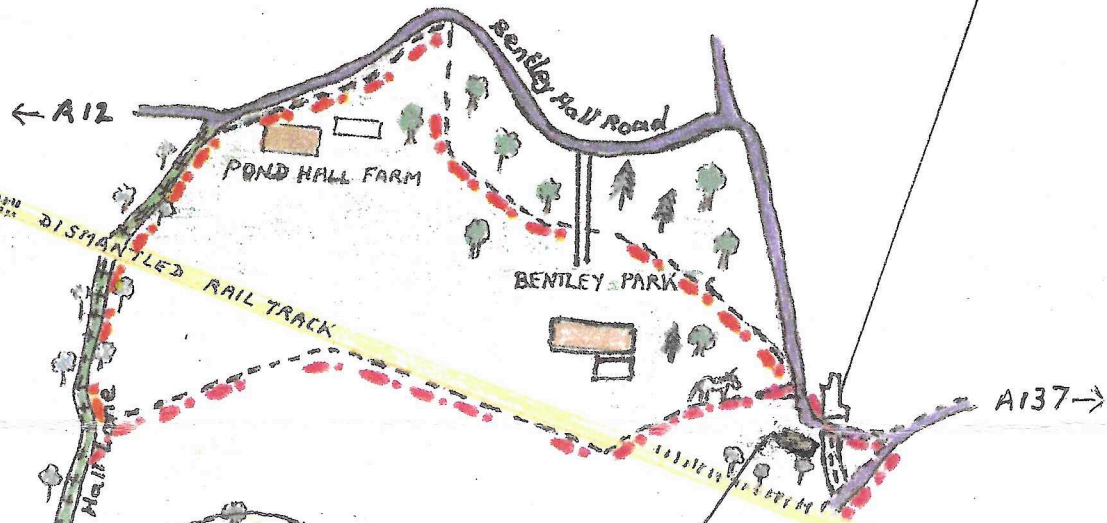


**'HEART OF BENTLEY'**  
3 mile circular walk





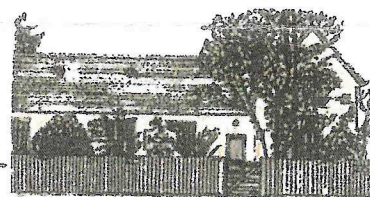
THE LONG BARN



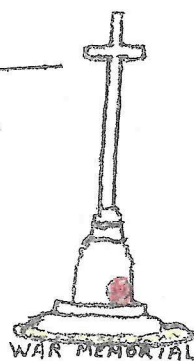
BENTLEY HALL



ST MARY'S CHURCH



BENTLEY C.E.V.C. PRIMARY SCHOOL



WAR MEMORIAL

KEY

- Walk
- Additional Walk
- Public Footpath
- Bridleway
- Public Road